

NEWSLETTER



SEIZING THE TREND, LEADING THE FUTURE — COMEUP UNVEILS NEW 48V ELECTRIC WINCH FOR ATV

As electrification extends beyond passenger cars into powersports and utility vehicles, electric ATVs are emerging as a fast-growing segment. COMEUP has embraced this shift by introducing its new 48V Electric Winch — a compact, high-performance solution engineered specifically for electric and hybrid ATVs.

Meeting Market Demands — 48V Becomes the New Benchmark

The 48V system is becoming the preferred voltage architecture for next-generation light-duty off-road vehicles. COMEUP's 48V winch delivers strong pulling power, low energy consumption, and smart control features, making it ideal for both OEM integration and aftermarket upgrades in the ATV sector.

The Powersports winch market is expected to grow steadily with the rise of electrified recreational and utility vehicles. COMEUP is expanding its 48V winch platform to meet this demand, supporting clean energy mobility with rugged, reliable performance in every terrain.





PN 123561 12V
123412 48V

Features Include

- High efficient, low amp. draw and sealed permanent magnet motor.
- Lightweight and compact design is easy for front of vehicle.
- Winch drum centered avoids tire interference of rope and provides streamlined appearance.
- Mechanical spring applied and permanent magnet motor dynamic brakes together.
- Cam activated clutch device for rapid wire rope payout.
- Full metal 3 stage planetary gear train for greater pulling force.
- Submersible sealed contactor handles high amps and allows higher duty cycle.

Specifications

Rated line pull:	1,361 kg (3,000 lb) single line
Line speed (1 st layer):	5.7 mpm / 18.7 fpm 25 A / 12V or 4.6 mpm / 15.1 fpm 5A / 48V at no load 2.0 mpm / 6.6 fpm 230 A / 12V or 55A / 48V at full load
Motor:	800 w / 1.0 hp 12V, permanent magnet 800 w / 1.0 hp 48V, permanent magnet
Gear ratio:	3-stage planetary 138.5:1
Clutch (freespooling):	Sliding pin and ring gear
Brake:	Mechanical spring applied and permanent magnet motor dynamic brakes together
Winch construction:	Aluminum die cast housings and drum
Drum size:	55 x 105 x 75 L (2.2" x 4.1" x 3" L)
Control:	Handlebar rocker switch
Rope:	Galvanized aircraft A7 x 19
Size:	4.8 mm x 15.2 m (3/16" x 50')
Mounting bolts pattern:	76 x 124 mm (3" x 4.9")

Standard Compliance:

- CE Machinery Directive 2006/42/EC
- CE EMC Directive 2014/30/EU

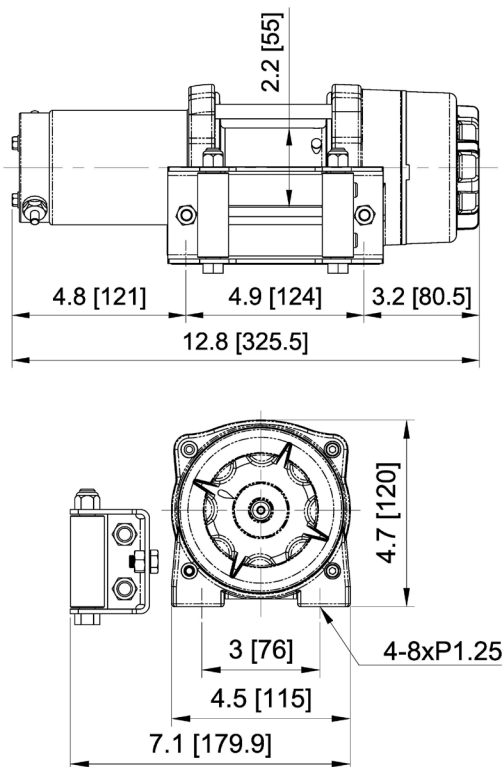
Comeup Industries Inc.

Web site: www.comeupwinch.com

Tel: +886-2-2497-1788 Fax: +886-2-2497-1699 Email: info@comeup.com.tw
Address: No.139, Jieyukeng Rd., Ruifang Dist., New Taipei City 22453, Taiwan



Dimension in in/mm



Performance Data

Line Pull and Rope Capacity		
Layer of Wire Rope	Pull by Layer Kg / lb	Total Rope on the Drum m / ft
1 st	1,361 / 3,000	2.8 / 9.3
2 nd	1,173 / 2,858	6.1 / 20.1
3 rd	1,030 / 2,271	9.9 / 32.5
4 th	918 / 2,025	14.1 / 46.3
5 th	829 / 1,827	15.2 / 50.0

Line Speed and Amp. Draw (1st layer of wire rope on the drum)				
Line Pull	Line Speed mpm/fpm		Amp. Draw	
Kg / lb	12V	48V	12V	48V
No Load	5.7 / 18.7	4.6 / 15.1	25	5
454 / 1,000	4.0 / 13.1	4.0 / 13.1	80	15
907 / 2,000	3.0 / 9.8	2.6 / 8.5	140	30
1,361 / 3,000	2.0 / 6.6	2.0 / 6.6	230	55

Standard Accessories

- Wire rope 3/16" x 50' w/clevis hook
- Handlebar rocker switch kit
- Roller fairlead
- Mounting hardware
- Handlebar hardware
- Contactor pack

Package

- Winch weight (including rope): 18 lb / 8.2 kg
- Gross weight: 12.5 kg / 27.6 lb
- Box dimension: 349 x 331 x 144 mm
(13.7" x 13" x 5.7")

Warning

- The winch is not intended to be used in any manner for the movement or lifting of personnel.
- The rated line pull shown is based on the first layer of rope on the drum.
- The rope winding on the drum shall remain 5 wraps from the drum.

Warranty

Limited lifetime warranty for mechanical components and one (1) year warranty for electrical components from date of purchase. Wire/Synthetic ropes are not included under warranty.

Comeup Industries Inc.

Web site: www.comeupwinch.com

Tel: +886-2-2497-1788 Fax: +886-2-2497-1699 Email: info@comeup.com.tw
Address: No.139, Jieyukeng Rd., Ruifang Dist., New Taipei City 22453, Taiwan





PN 129300 12V
123428 48V

Features Include

- High efficient, low amp. draw and sealed permanent magnet motor.
- Lightweight and compact design is easy for front of vehicle.
- Winch drum centered avoids tire interference of rope and provides streamlined appearance.
- Mechanical spring applied and permanent magnet motor dynamic brakes together.
- Cam activated clutch device for rapid wire rope payout.
- 12 strand construction synthetic rope, coated to improve abrasion resistance and to protect from the ingress of dirt and grit.
- Submersible sealed contactor handles high amps and allows higher duty cycle.

Specifications

Rated line pull:	1,361 kg (3,000 lb) single line
Line speed (1 st layer):	5.7 mpm / 18.7 fpm 25 A/12V or 4.6 mpm /15.1 fpm 5A /48 Vat no load 2.0 mpm / 6.6 fpm 230 A/12V or 55A/48V at full load
Motor:	800 w / 1.0 hp 12V, permanent magnet 800 w / 1.0 hp 24V, permanent magnet 800 w / 1.0 hp 48V, permanent magnet
Gear ratio:	3-stage planetary 138.5:1
Clutch (freespooling):	Sliding pin and ring gear
Brake:	Mechanical spring applied and permanent magnet motor dynamic brakes together
Winch construction:	Aluminum die cast housings and drum
Drum size:	55 x 105 x 75 L (2.2" x 4.1" x 3" L)
Control:	Handlebar rocker switch
Rope:	Synthetic rope
Size:	4.8 mm x 15.2 m (3/16" x 50')
Mounting bolts pattern:	76 x 124 mm (3" x 4.9")
Standard Compliance:	

- CE Machinery Directive 2006/42/EC - CE EMC Directive 2014/30/EU

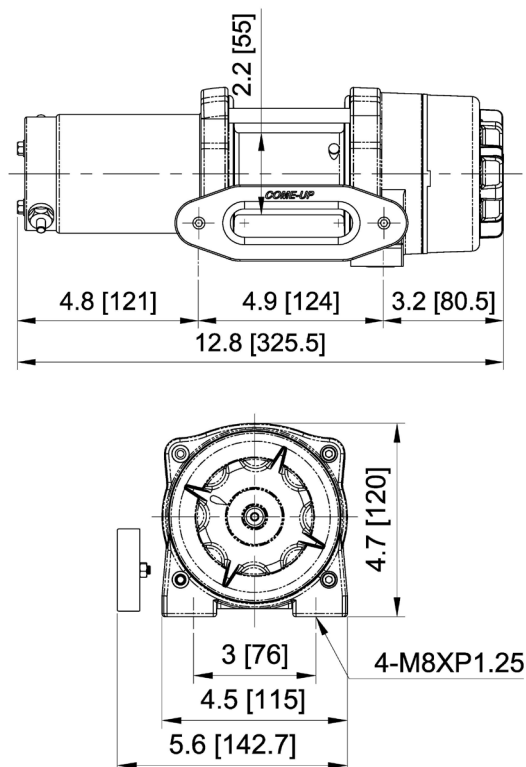
Comeup Industries Inc.

Web site: www.comeupwinch.com

Tel: +886-2-2497-1788 Fax: +886-2-2497-1699 Email: info@comeup.com.tw
Address: No.139, Jieyukeng Rd., Ruifang Dist., New Taipei City 22453, Taiwan



Dimension in in/mm



Performance Data

Line Pull and Rope Capacity		
Layer of Rope	Pull by Layer Kg / lb	Total Rope on the Drum m / ft
1 st	1,361 / 3,000	2.8 / 9.3
2 nd	1,173 / 2,858	6.1 / 20.1
3 rd	1,030 / 2,271	9.9 / 32.5
4 th	918 / 2,025	14.1 / 46.3
5 th	829 / 1,827	15.2 / 50.0

Line Speed and Amp. Draw (1st layer of rope on the drum)				
Line Pull	Line Speed mpm / fpm		Amp. Draw	
Kg / lb	12V	48V	12V	48V
No Load	5.7 / 18.7	4.6 / 15.1	25	5
454 / 1,000	4.0 / 13.1	4.0 / 13.1	80	15
907 / 2,000	3.0 / 9.8	2.6 / 8.5	140	30
1,361 / 3,000	2.0 / 6.6	2.0 / 6.6	230	55

Standard Accessories

- Synthetic rope 3/16" x 50' w/clevis hook
- Handlebar rocker switch kit
- Hawse fairlead
- Mounting hardware
- Handlebar hardware
- Contactor pack

Package

- Winch weight (including rope): 15.9 lb / 7.2 kg
- Gross weight: 11.5 kg / 25.3 lb
- Box dimension: 349 x 331 x 144 mm
(13.7" x 13" x 5.7")

Warning

- The winch is not intended to be used in any manner for the movement or lifting of personnel.
- The rated line pull shown is based on the first layer of rope on the drum.
- The rope winding on the drum shall remain 10 wraps from the drum.

Warranty

Limited lifetime warranty for mechanical components and one (1) year warranty for electrical components from date of purchase. Wire/Synthetic ropes are not included under warranty.

Comeup Industries Inc.

Web site: www.comeupwinch.com

Tel: +886-2-2497-1788 Fax: +886-2-2497-1699 Email: info@comeup.com.tw
Address: No.139, Jieyukeng Rd., Ruifang Dist., New Taipei City 22453, Taiwan



COMEUP WINCH

Cub 4



PN 123920 12V
123940 48V

Features Include

- High efficient, low amp. draw and sealed permanent magnet motor.
- Lightweight and compact design is easy for front of vehicle.
- Winch drum centered avoids tire interference of rope and provides streamlined appearance.
- Mechanical spring applied and permanent magnet motor dynamic brakes together.
- Cam activated clutch device for rapid wire rope payout.
- Full metal 3 stage planetary gear train for greater pulling force.
- Submersible sealed contactor handles high amps and allows higher duty cycle.

Specifications

Rated line pull:	1,814 kg (4,000 lb) single line
Line speed (1 st layer):	4.6 mpm / 15.1 fpm / 30 A / 12V or 3.6 mpm / 11.8 fpm / 5A /48V at no load 2.0 mpm / 6.6 fpm / 230 A / 12V or 1.8 mpm / 5.9 fpm / 5A /48V at full load
Motor:	800 w / 1.0 hp 12V, permanent magnet 800 w / 1.0 hp 48V, permanent magnet
Gear ratio:	3-stage planetary 191:1
Clutch (freespooling):	Siding pin and ring gear
Brake:	Mechanical spring applied and permanent magnet motor dynamic brakes together
Winch construction:	Aluminum die cast housings and drum
Drum size:	55 x 104 x 119 L (2.2 " x 4 " x 4.7 " L)
Control:	Handlebar rocker switch
Wire rope:	Galvanized aircraft A7 x 19
Size:	5.5 mm x 15.2 m (7/32" x 50')
Mounting bolts pattern:	76 x 168 mm (3" x 6.6")

Standard Compliance:

- CE Machinery Directive 2006/42/EC
- CE EMC Directive 2014/30/EU

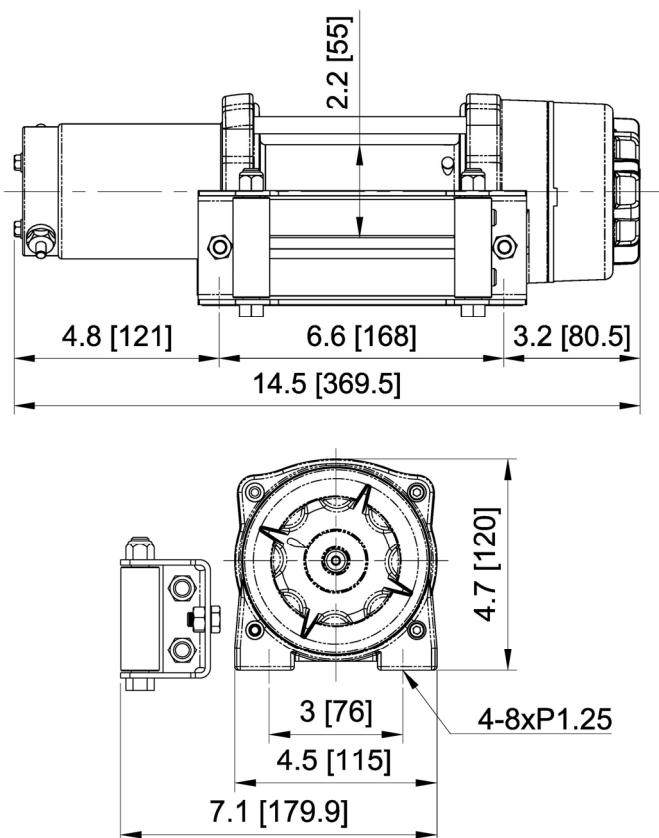
Comeup Industries Inc.

Web site: www.comeupwinch.com

Tel: +886-2-2497-1788 Fax: +886-2-2497-1699 Email: info@comeup.com.tw
Address: No.139, Jieyukeng Rd., Ruifang Dist., New Taipei City 22453, Taiwan



Dimension in in/mm



Performance Data

Line Pull and Rope Capacity		
Layer of Wire Rope	Pull by Layer Kg / lb	Total Rope on the Drum m / ft
1 st	1,814 / 4,000	4.0 / 13.2
2 nd	1,535 / 3,385	8.8 / 28.8
3 rd	1,331 / 2,933	14.2 / 46.7
4 th	1,174 / 2,588	15.2 / 50.0

Line Speed and Amp. Draw (1st layer of wire rope on the drum)				
Line Pull Kg / lb	Line Speed mpm / fpm		Amp. Draw	
	12V	48V	12V	48V
No Load	4.6 / 15.1	3.6 / 11.8	30	5
454 / 1,000	3.4 / 11.2	3.1 / 10.1	60	13
907 / 2,000	2.9 / 9.5	2.3 / 7.5	120	25
1,361 / 3,000	2.4 / 7.9	2.0 / 6.5	180	36
1,814 / 4,000	2.0 / 6.6	1.8 / 5.9	230	55

Standard Accessories

- Wire rope 7/32" x 50' w/clevis hook
- Handlebar rocker switch kit
- Roller fairlead
- Mounting hardware
- Handlebar hardware
- Contactor pack

Package

- Winch weight (including rope): 8.9 kg / 19.6 lb
- Gross weight: 13.1 kg / 28.9 lb
- Box dimension: 380 x 362 x 144 mm
(15" x 14.3" x 5.7")

Warning

- The winch is not intended to be used in any manner for the movement or lifting of personnel.
- The rated line pull shown is based on the first layer of rope on the drum.
- The rope winding on the drum shall remain 5 wraps from the drum.

Warranty

Limited lifetime warranty for mechanical components and one (1) year warranty for electrical components from date of purchase. Wire/Synthetic ropes are not included under warranty.

Comeup Industries Inc.

Web site: www.comeupwinch.com

Tel: +886-2-2497-1788 Fax: +886-2-2497-1699 Email: info@comeup.com.tw
Address: No.139, Jieyukeng Rd., Ruifang Dist., New Taipei City 22453, Taiwan



COMEUP WINCH

Cub 4s



PN 129410 12V
123952 48V

Features Include

- High efficient, low amp. draw and sealed permanent magnet motor.
- Lightweight and compact design is easy for front of vehicle.
- Winch drum centered avoids tire interference of rope and provides streamlined appearance.
- Mechanical spring applied and permanent magnet motor dynamic brakes together.
- Cam activated clutch device for rapid wire rope payout.
- 12 strand construction synthetic rope, coated to improve abrasion resistance and to protect from the ingress of dirt and grit.
- Submersible sealed contactor handles high amps and allows higher duty cycle.

Specifications

Rated line pull:	1,814 kg (4,000 lb) single line
Line speed (1 st layer):	4.6 mpm / 15.1 fpm / 30 A / 12V or 3.6 mpm / 11.8 fpm / 5A /48V at no load 2.0 mpm / 6.6 fpm / 230 A / 12V or 1.8 mpm / 5.9 fpm / 5A /48V at full load
Motor:	800 w / 1.0 hp 12V, permanent magnet 800 w / 1.0 hp 48V, permanent magnet
Gear ratio:	3-stage planetary 191:1
Clutch (freespooling):	Sliding pin and ring gear
Brake:	Mechanical spring applied and permanent magnet motor dynamic brakes together
Winch construction:	Aluminum die cast housings and drum
Drum size:	55 x 104 x 119 L (2.2" x 4" x 4.7" L)
Control:	Handlebar rocker switch
Rope:	Synthetic rope
Size:	5.5 mm x 15.2 m (7/32" x 50')
Mounting bolts pattern:	76 x 168 mm (3" x 6.6")
Standard Compliance:	
- CE Machinery Directive 2006/42/EC	
- CE EMC Directive 2014/30/EU	

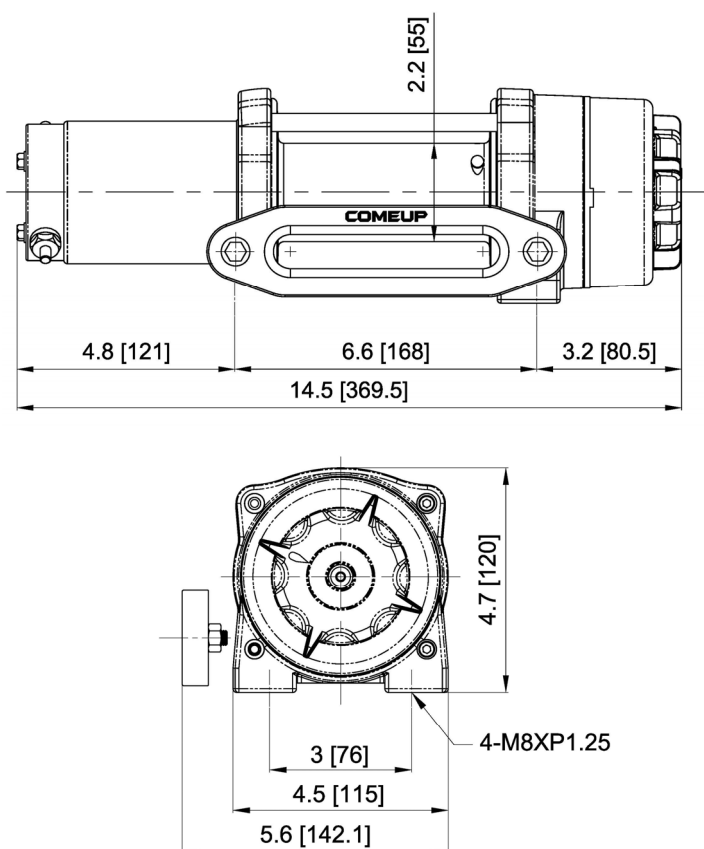
Comeup Industries Inc.

Web site: www.comeupwinch.com

Tel: +886-2-2497-1788 Fax: +886-2-2497-1699 Email: info@comeup.com.tw
Address: No.139, Jieyukeng Rd., Ruifang Dist., New Taipei City 22453, Taiwan



Dimension in in/mm



Performance Data

Line Pull and Rope Capacity		
Layer of Rope	Pull by Layer Kg / lb	Total Rope on the Drum m / ft
1 st	1,814 / 4,000	4.0 / 13.2
2 nd	1,535 / 3,385	8.8 / 28.8
3 rd	1,331 / 2,933	14.2 / 46.7
4 th	1,174 / 2,588	15.2 / 50.0

Line Speed and Amp. Draw (1st layer of rope on the drum)				
Line Pull	Line Speed mpm / fpm		Amp. Draw	
Kg / lb	12V	48V	12V	48V
No Load	4.6 / 15.1	3.6 / 11.8	30	5
454 / 1,000	3.4 / 11.2	3.1 / 10.1	60	13
907 / 2,000	2.9 / 9.5	2.3 / 7.5	120	25
1,361 / 3,000	2.4 / 7.9	2.0 / 6.5	180	36
1,814 / 4,000	2.0 / 6.6	1.8 / 5.9	230	55

Standard Accessories

- Synthetic rope 7/32" x 50' w/clevis hook
- Handlebar rocker switch kit
- Hawse fairlead
- Mounting hardware
- Handlebar hardware
- Contactor pack

Package

- Winch weight (including rope): 8.9 kg / 19.6 lb
- Gross weight: 13.1 kg / 28.9 lb
- Box dimension: 380 x 362 x 144 mm
(15" x 14.3" x 5.7")

Warning

- The winch is not intended to be used in any manner for the movement or lifting of personnel.
- The rated line pull shown is based on the first layer of rope on the drum.
- The rope winding on the drum shall remain 10 wraps from the drum.

Warranty

Limited lifetime warranty for mechanical components and one (1) year warranty for electrical components from date of purchase. Wire/Synthetic ropes are not included under warranty.

Comeup Industries Inc.

Web site: www.comeupwinch.com

Tel: +886-2-2497-1788 Fax: +886-2-2497-1699 Email: info@comeup.com.tw
Address: No.139, Jieyukeng Rd., Ruifang Dist., New Taipei City 22453, Taiwan

