

# COMEUP WINCH

## Model: GTD-800

PN: 750888 12V  
750898 24V

### Introduction

#### ► Feature

Line lifting:	362 kg / 800 lb wire rope first layer
Recommended Wire rope:	4.0 mm × 18.3 m (5/32" × 60') galvanized aircraft A7 × 19
Brake:	Mechanical spring applied and permanent motor dynamic brakes together
Control:	Handheld pendant switch powers the hoist

#### ► Unpacking

- Hoist assembly..... 1 pc

#### ► Read this manual carefully

You should carefully read and understand this manual before operating it. Careless hoist operation may result in personal injury hazards or property damage.

#### ► Information requesting or parts ordering

Please specify the following information:

- Hoist PN
- Serial number
- Quantity for each part
- Part description
- Replacement part number

### Installation

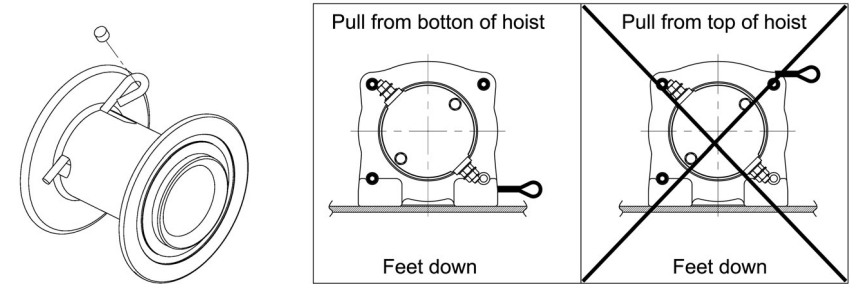
Before using the hoist, make sure all electrical components have no corrosion or damaged; the environment should be clear and dry.

#### ► Hoist mounting

Four (4) M8 x 25L 8.8 grade with 22 N-m torque settings (maximum) high tensile steel bolts must be used in order to sustain the loads imposed on the winch mounting.

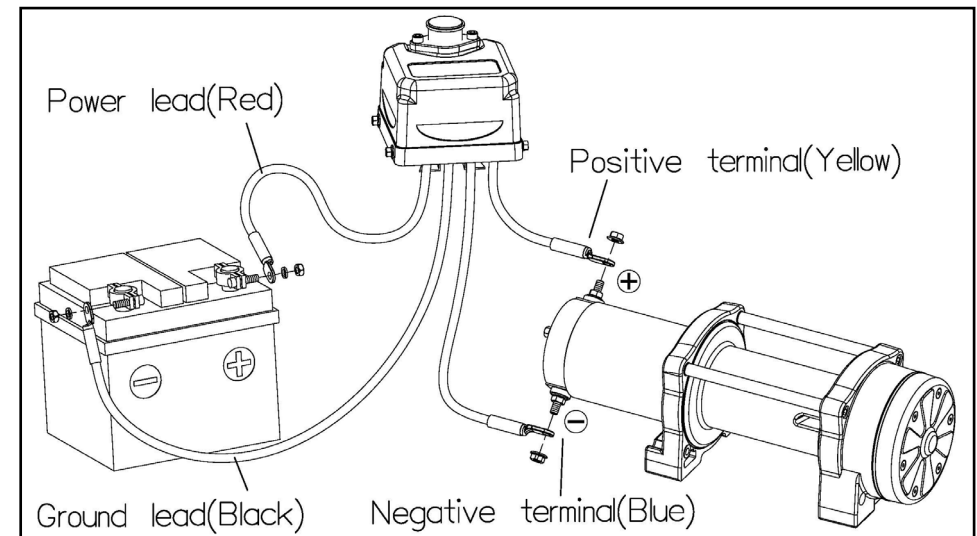
#### ► Wire Rope Replacement

- Feed the end of the wire rope into anchor hole in the drum and make a self-circle on the anchor pocket. Insert a wedge in the self-circle and tighten the rope for securing purpose.
- Make sure the first layer of wire rope is tight and maintain a freeboard at least 1.5 x rope diameter.
- Wire rope shall be wound in an under-wound orientation only.



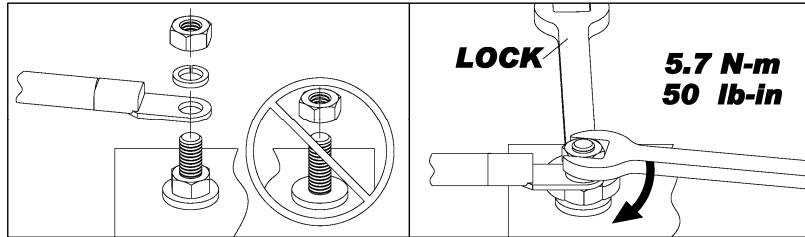
#### ► Recommended Wiring Diagram

- Connect positive/negative terminal cables to the winch motor.
- Attach the ground lead firmly to the negative (-) battery terminal and power lead to the positive (+) battery terminal. The voltage drop for the winch motor must not exceed 10% of the nominal voltage of 12/24V DC.



## ► Nut fastening for motor & contactor

- Holding the lower nut on the stub and fastening the upper nut clockwise.
- The torque setting for nut is 5.7N-m / 50 lb-in.



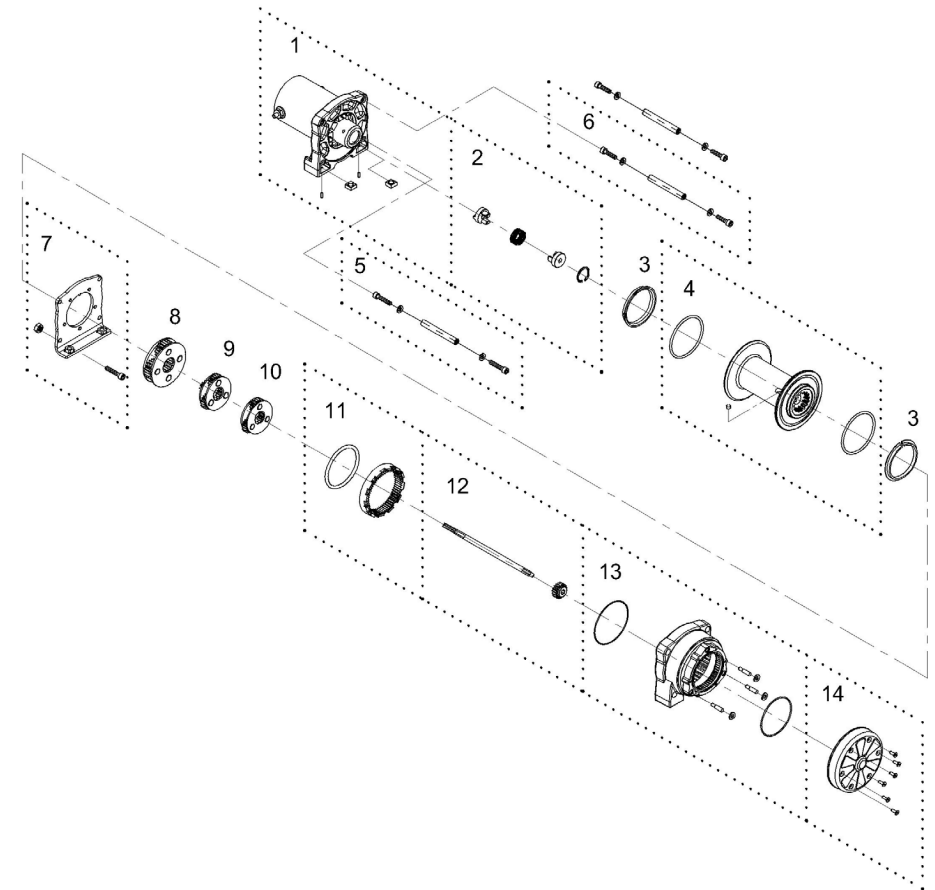
## Warning

- The operator shall always work in compliance with the operating instructions.
- Overload shall be forbidden and overload protection shall be required.
- Ban on transporting persons and excessive inching shall be avoided.
- Don't try to move obstructed loads and side-pull of load is not allowed.
- The rope winding on the drum shall remain 5 wraps from the drum.

## Parts List

Item No.	Description	Part No.	Qty
1	Motor 12V	882417	1
	Motor 24V	882288	
2	Motor couple kit	884271	1
3	Drum bushing	880990	2
4	Drum kit	882319	1
5	Tie bar kit	881007	1
6	Tie bar kit	881008	2
7	Gearbox support rack	880994	1
8	3 <sup>rd</sup> stage carrier	880995	1
9	2 <sup>nd</sup> stage carrier	880996	1
10	1 <sup>st</sup> stage carrier	881009	1
11	2 <sup>nd</sup> ring gear kit	880998	1
12	1 <sup>st</sup> shaft kit	881010	1
13	Gearbox kit	882418	1
14	Gearbox rear cover kit	882320	1

## Hoist Assembly



Ver:02