



Electric Grooved Winch

Model: **CEP-3001-8/11/14MD**

P/N: 275950-8MD 277339-11MD 270105-14MD 380V50Hz

► Feature

Lifting Capacity	3,000 kg, double fall load
Power Source	3 phase 50 Hz 380V
Motor	7.5 hp x 4 p
Drum	Grooved
Wire Rope	12 mm x 22 m for PN:275950 12 mm x 28 m for PN:277339 12 mm x 34 m for PN:270105
Lifting Height	8 m for PN:275950 , 11 m for PN:277339 , 14 m for PN:270105
Lifting Speed	5.8 m/min, double fall load
Brake	Electromagnetic spring-applied failsafe brake
Control	Pendant switch w/cord 3.5 mm ² x 5C x 3 m

► Read this manual carefully

You should carefully read and understand this manual before operating it.
Careless winch operation may result in personal injury hazards or property damage

► Warning

- The winch is not intended to be used in any manner for the movement or lifting of personnel.
- The lifting capacity shown is based on single fall rope on the drum.
- The rope winding on the drum shall remain 3 wraps from the drum.

► Information requesting or parts ordering

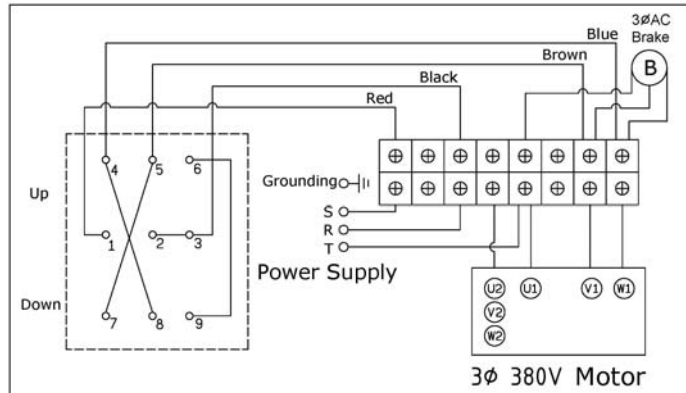
Please specify the followings information:

- Winch PN
- Serial number
- Part description
- Replacement part number
- Quantity for each part

► Maintenance and Inspection

Classification of checks				Checking Item		Checking Method	Checking Reference
Daily	Periodical						
	One month	Three month	One year				
			☉	Marking	Label and the like	Visual	Existence of label
		☉		Installation	Winding-in direction of wire rope	Visual , measuring	Fleet angle θ=within 3.0 degree
		☉			Loosing and centre run-out foundation	Checking of installing bolts	Existence of abnormality
☉				Control Switch	Working	Manual	Reasonable actuation
	☉				Condition of clamping of wiring	Decomposition checking	Confirming of accuracy of fastening condition
		☉			Wearing of contact point	Decomposition checking	To be free from remarkable wearing and damage
		☉			Outer damage of lead	Visual	To be free from exposure of conductive wire
☉	☉				Attaching condition of earth line	Visual	Existence of abnormalities of connecting wires
		☉			Condition of insulation	Measure with 500v insulation-Resistance tester	1MΩ min
			☉	Motor	Condition of insulation	Measure with resistance tester	1MΩ min
			☉		Staining damage	Decomposition check	Existence of abnormalities
		☉		Brake	Braking gap	Measuring	Within 0.35 mm
		☉			Wearing of disc	Decomposition check	To be free from remarkable wear and damage
☉	☉				Performance	Visual	Distance to be not more than 1.5% of rope length to be wound-in during 1 minute
			☉	Gear	Damage , wearing	Decomposition check	To be free from remarkable wear and damage
		☉			Condition of grease feeding	Measuring	Existence of suitability of amount and deterioration with grease Mobilux EP2.Shell Unedo 2 or Esso Beacon EP2

► Wiring Diagram



► Parts List

Item No.	Description	Part No.	Qty
1	Motor kit	880637	1
2	Motor support rack kit	881868	1
3	Drum kit for PN:275950	882388	1
	Drum kit for PN:277339	882607	1
	Drum kit for PN:270105	882608	1
4	Connecting shaft kit for PN:275950	882389	1
	Connecting shaft kit for PN:277339	882609	1
	Connecting shaft kit for PN:270105	882610	1
5	Gearbox support rack kit	881869	1
6	3 rd stage carrier	881870	1
7	3 rd ring gear kit	881871	1
8	Gear box kit	881872	1
9	2 nd shaft kit	881873	1
10	1 st gear kit	881874	1
11	3 rd shaft kit	881875	1
12	1 st shaft kit	881876	1
13	Brake base kit	881877	1
14	Brake kit	882390	1
14-1	Brake disc	880751	2
14-2	Brake coil	880769	1
15	Remote control	881773	1
16	Wire rope for PN:275950	882392	2
	Wire rope for PN:277339	882611	2
	Wire rope for PN:270105	882612	2
17	Base plate kit for PN:275950	882613	1
	Base plate kit for PN:277339	882614	1
	Base plate kit for PN:270105	882615	1

► Winch Assembly

