

COMEUP

Electric Grooved Winch

Model: **CEP-2000-8/9/11/12/14/15MD**

P/N: 271879-8MD 271410-9MD 278430-11MD 271420-12MD 277336-14MD 271430-15MD 380V50Hz

► Feature

Lifting Capacity	2,000 kg, double fall load
Power Source	3 phase 50 Hz 380V
Motor	3 hp x 4 p
Drum	Grooved
Wire Rope	10 mm x 22 m for PN:271879.271410 10 mm x 28 m for PN:278430.271420 10 mm x 34 m for PN:277336.271430
Lifting Height	8 m for PN:271879 · 9 m for PN:271410 · 11 m for PN:278430 12 m for PN:271420 · 14 m for PN:277336 · 15 m for PN:271430
Lifting Speed	5.1 m/min, double fall load
Brake	Electromagnetic spring-applied failsafe brake
Control	Pendant switch w/cord 2.0 mm ² x 5C x 3 m

► Read this manual carefully

You should carefully read and understand this manual before operating it.
Careless winch operation may result in personal injury hazards or property damage

► Warning

- The winch is not intended to be used in any manner for the movement or lifting of personnel.
- The lifting capacity shown is based on single fall rope on the drum.
- The rope winding on the drum shall remain 3 wraps from the drum.

► Information requesting or parts ordering

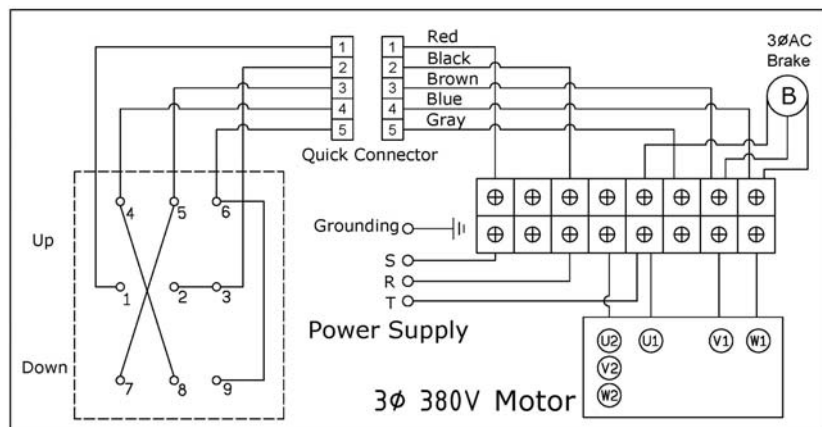
Please specify the followings information:

- Winch PN
- Serial number
- Part description
- Replacement part number
- Quantity for each part

► Maintenance and Inspection

Classification of checks				Checking Item		Checking Method	Checking Reference
Daily	Periodical						
	One month	Three month	One year				
			☉	Marking	Label and the like	Visual	Existence of label
		☉		Installation	Winding-in direction of wire rope	Visual , measuring	Fleet angle θ=within 3.0 degree
		☉			Loosing and centre run-out foundation	Checking of installing bolts	Existence of abnormality
☉				Control Switch	Working	Manual	Reasonable actuation
	☉				Condition of clamping of wiring	Decomposition checking	Confirming of accuracy of fastening condition
		☉			Wearing of contact point	Decomposition checking	To be free from remarkable wearing and damage
		☉			Outer damage of lead	Visual	To be free from exposure of conductive wire
☉	☉				Attaching condition of earth line	Visual	Existence of abnormalities of connecting wires
		☉			Condition of insulation	Measure with 500v insulation-Resistance tester	1MΩ min
			☉	Motor	Condition of insulation	Measure with resistance tester	1MΩ min
			☉		Staining damage	Decomposition check	Existence of abnormalities
		☉		Brake	Braking gap	Measuring	Within 0.35 mm
		☉			Wearing of disc	Decomposition check	To be free from remarkable wear and damage
☉	☉				Performance	Visual	Distance to be not more than 1.5% of rope length to be wound-in during 1 minute
			☉	Gear	Damage , wearing	Decomposition check	To be free from remarkable wear and damage
		☉			Condition of grease feeding	Measuring	Existence of suitability of amount and deterioration with grease Mobilux EP2.Shell Unedo 2 or Esso Beacon EP2

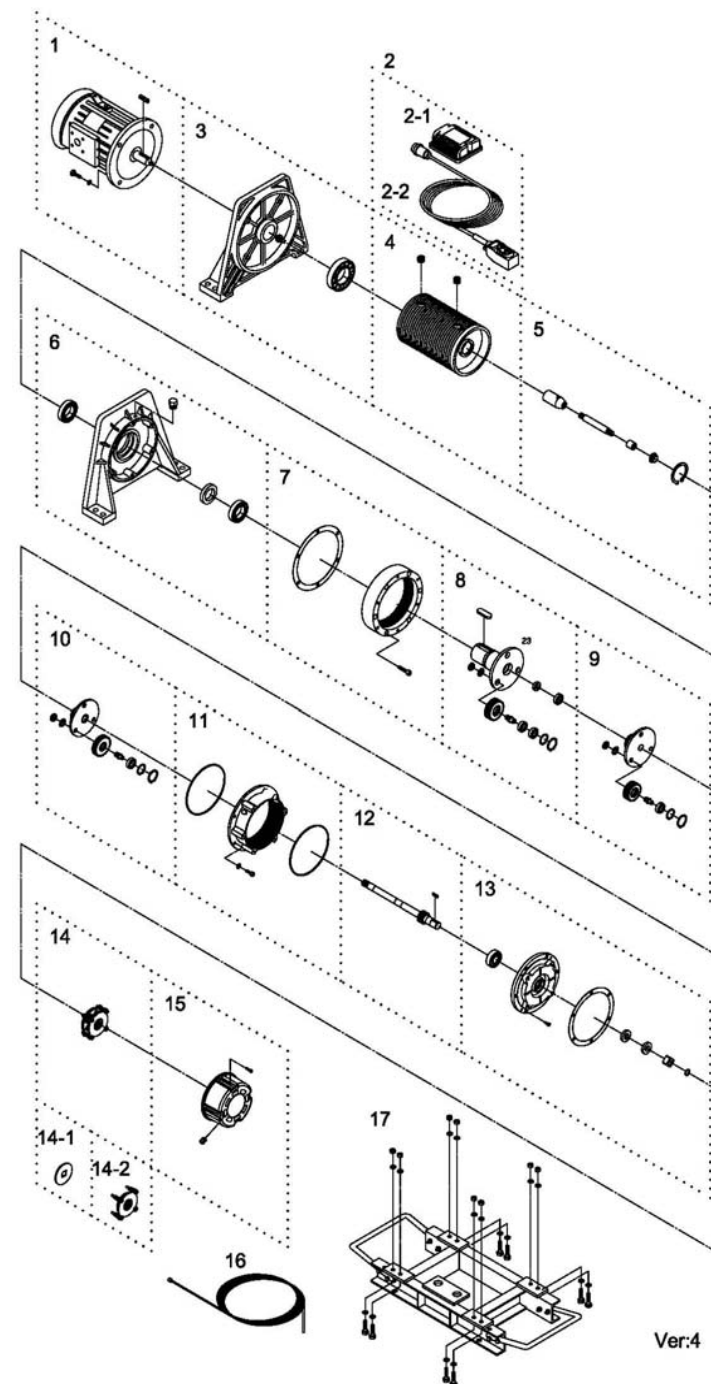
► Wiring Diagram



Parts List

Item No.	Description	Part No.	Qty
1	Induction motor kit 380V	882576	1
2	Control kit	881999	1
2-1	Control box	880957	1
2-2	Remote control	881998	1
3	Motor support rack kit	882577	1
4	Drum kit for PN:271879,271410	882579	1
	Drum kit for PN:278430,271420	882580	
	Drum kit for PN:277336,271430	882581	
5	Connect shaft kit for PN:271879,271410	882583	1
	Connect shaft kit for PN:278430,271420	882584	
	Connect shaft kit for PN:277336,271430	882585	
6	Gearbox support rack kit	882586	1
7	3 rd ring gear kit	882587	1
8	3 rd stage carrier kit	882588	1
9	2 nd stage carrier kit	882589	1
10	1 st stage carrier kit	882590	1
11	Gear box kit	882591	1
12	1 st shaft kit	882592	1
13	Gearbox rear cover kit	882593	1
14	Brake kit AC 380V	882621	1
14-1	Brake disc	882225	1
14-2	Brake coil AC 380V	882631	1
15	Brake cover kit	882594	1
16	Wire rope for PN:271879,271410	882596	2
	Wire rope for PN:278430,271420	882597	
	Wire rope for PN:277336,271430	882598	
17	Base plate kit for PN:271879,271410	882600	1
	Base plate kit for PN:278430,271420	882601	
	Base plate kit for PN:277336,271430	882602	

Winch Assembly



Ver:4