

# COMEUP WINCH

Model: **GTD-2200**

PN: 752003 12V  
752004 24V

## Introduction

### ► Feature

Line lifting:	998 kg / 2,200 lb wire rope first layer
Recommended Wire rope:	6.3 mm × 30.5 m (1/4" × 100') galvanized aircraft A7 × 19
Brake:	Both Mechanical cone brake and permanent motor dynamic brakes
Control:	Handheld pendant switch powers the hoist

### ► Unpacking

- Hoist assembly..... 1 pc

### ► Read this manual carefully

You should carefully read and understand this manual before operating it. Careless hoist operation may result in personal injury hazards or property damage.

### ► Information requesting or parts ordering

Please specify the following information:

- |                          |                           |
|--------------------------|---------------------------|
| • Hoist PN               | • Part description        |
| • Serial number          | • Replacement part number |
| • Quantity for each part |                           |

## Installation

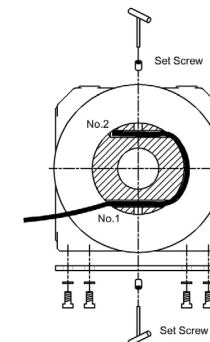
Before using the hoist, make sure all electrical components have no corrosion or damaged; the environment should be clear and dry.

### ► Hoist mounting

Eight(8) M10 x 35L 8.8 grade with 44 N-m torque settings (maximum) high tensile steel bolts must be used in order to sustain the loads imposed on the winch mounting.

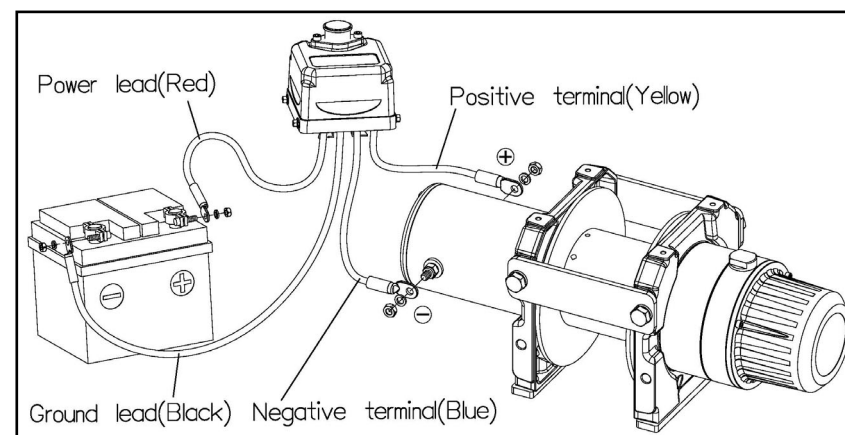
### ► Recommended Wire Rope Replacement

- Feed the end of the wire rope into No. 1 anchor hole in the drum and wind about 1/4 wrap of rope on the drum. Insert the wire rope into No. 2 hole and tighten the set screw securely.
- Make sure the first layer of wire rope is tight and maintain a freeboard at least 1.5 x rope diameter.
- Wire rope shall be wound in an under-wound orientation only.
- To compensate for uneven spooling and the decrease in line pull capacity as the drum fills up, use as short a wire rope as practical.



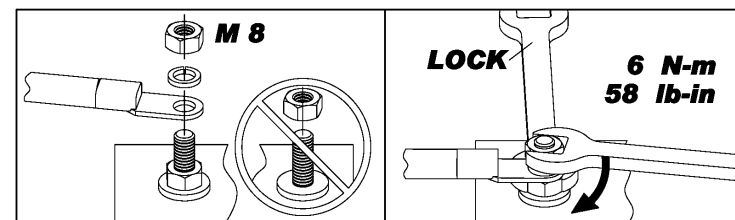
### ► Recommended Wiring Diagram

- Connect positive/negative terminal cables to the winch motor.
- Attach the ground lead firmly to the negative (–) battery terminal and power lead to the positive (+) battery terminal. The voltage drop for the winch motor must not exceed 10% of the nominal voltage of 12/24V DC.



### ► Nut fastening for motor & contactor

- Holding the lower nut on the stub and fastening the upper nut clockwise.
- The torque setting for nut is 6 N-m / 58 lb-in. (Terminal material copper)



## Warning

- The operator shall always work in compliance with the operating instructions.
- Overload shall be forbidden and overload protection shall be required.
- Ban on transporting persons and excessive inching shall be avoided.
- Don't try to move obstructed loads and side-pull of load is not allowed
- The rope winding on the drum shall remain 5 wraps from the drum.

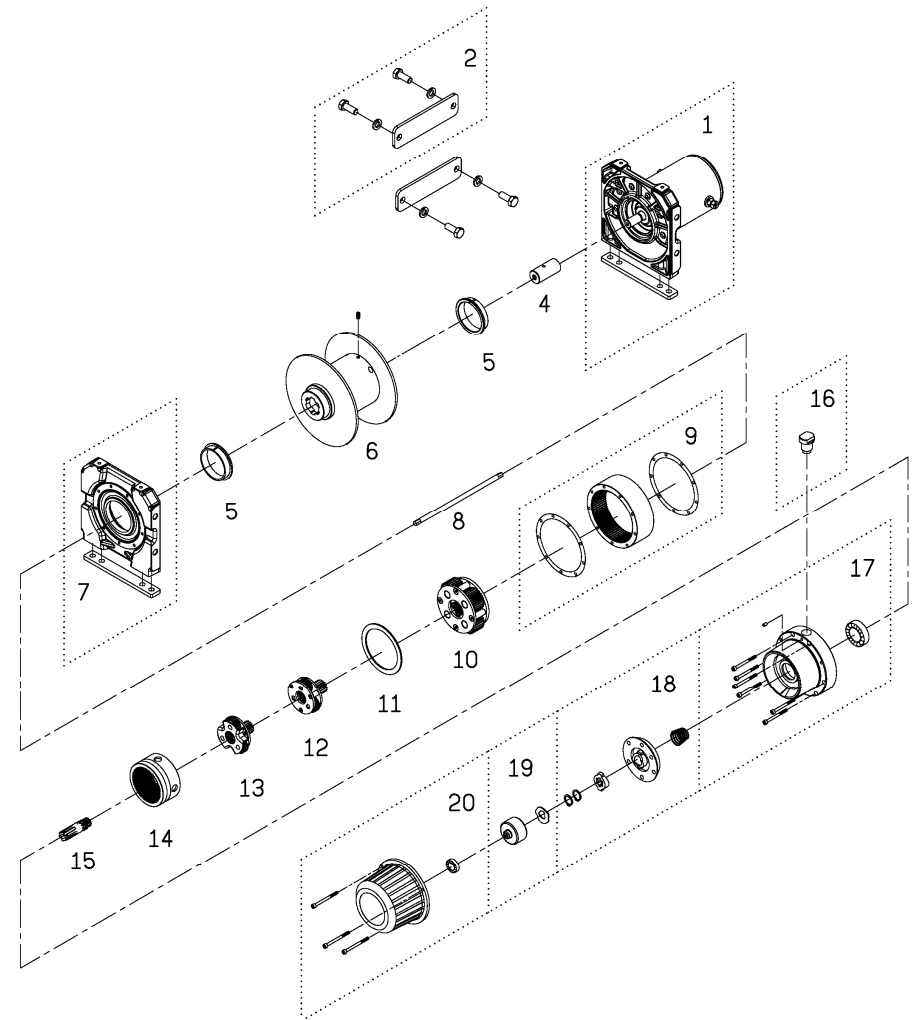
## Performance Data

Lifting Load	Line Speed				Amp. Draw	Percentage Duty Cycle min / 10 min
	mpm		fpm			
kg / lb	12V	24V	12V	24V	12V / 24V	12V / 24V
No load	5.3	5.8	17.4	19	25 / 18	Cont.
181 / 400	5.2	5.7	17.1	18.7	50 / 25	8.0
362 / 800	5.1	5.6	16.7	18.4	75 / 35	6.0
544 / 1,200	4.8	5.5	15.7	18	95 / 55	4.0
771 / 1,700	4.6	5.3	15.1	17.4	115 / 70	3.0
998/ 2,200	4.2	5.0	13.8	16.4	135 / 90	2.0

## Parts List

Item No.	Description	Part No.	Qty
1	Motor 12V	884318	1
	Motor 24V	884319	
2	Tie bar kit	882430	2
4	Motor coupling	880005	1
5	Drum bushing	880006	2
6	Drum kit	882431	1
7	Gearbox support rack	882428	1
8	1 <sup>st</sup> shaft	882432	1
9	3 <sup>rd</sup> ring gear kit	882424	1
10	3 <sup>rd</sup> stage carrier kit	881525	1
11	3 <sup>rd</sup> bushing	880014	1
12	2 <sup>nd</sup> stage carrier kit	881526	1
13	1 <sup>st</sup> stage carrier kit	881527	1
14	1 <sup>st</sup> & 2 <sup>nd</sup> ring gear	881528	1
15	1 <sup>st</sup> pinion kit	880018	1
16	Tap screw	882433	1
17	Gear box kit	882425	1
18	Cone brake disc kit	882529	1
19	Brake clutch base	883320	1
20	Brake cover kit	882426	1

## Hoist Assembly



2023/03/27 Ver:06